

# OPAHEKE SCHOOL

Sharing Caring Learning And Achieving

[office@opaheke.school.nz](mailto:office@opaheke.school.nz)

Web Site: [www.opaheke.school.nz](http://www.opaheke.school.nz)

Tasman Drive

PAPAKURA 2113

Ph 298 5410 Fax 298 0739

## “The Opaheke Way”

Newsletter No 13/10

Dear Parents,  
Greetings to all of you as we hopefully near the end of a very wet winter.

### **BOOKWEEK**

Did you see all of the pupils and teachers walking around the block in their book character clothes last Friday morning? It certainly caused a great deal of interest among local residents, passing motorists and parents. Over the days of Bookweek we had two visiting authors, enjoyed Funky Fairytales, funded by our PTA, lunchtime library activities, theme studies and a number of other events all aimed at promoting an enjoyment in reading. Special thanks to our student librarians, to

Mrs Pryor, Mrs Smith and Mrs Cantley who all worked hard to plan the activities.

### **QUIZ NIGHTS**

Fancy a night out for only \$5! Throw in a lot of competitive fun, a seriously humorous quizmaster, convivial company, food and drinks. Friday evening 17 September in the hall. Bring some friends along and make up a table of 8 to 10 adults. Tickets are available through the school office. Support our wonderful PTA and have a cheap enjoyable night out.



### **MAKING A TIME TO MEET**

The School requests that parents make a time to see the class teacher by a note, or the home reader book for juniors or by telephone/office email. For teachers, the after school time is better. Before school, class teachers need to arrange resources, photocopy essential activities and set up the programmes for the students for the day. Parents cannot expect to disrupt a programme for the students once the school day has begun.

25 August 2010

### **SPECIAL POINTS OF INTEREST:**

- \* *Out of Zone Enrolments*
- \* *Public Health Website*
- \* *Teacher Appreciation Day*

### **Fun Fact**

**Popcorn bursts when heated because the kernel contains water which turns to steam, causing pressure to build up and POP!**



### **SCHOOL AMENITY**

The following is the Bank Account for the Opaheke School Board of Trustees if you would like to set up an automatic payment.

**ASB Bank**  
**12 3031 0728049 00**

## **BOOK WEEK**

**'I've Been there'** Samuel Ward  
*I've been nearly everywhere  
And seen most everything.  
I sat with great men from our  
past  
And met with alien beings.*

*I streaked through distant  
galaxies  
And rode the Pony Express.  
I sailed the fastest Clipper ships  
And fought in fighter jets.*

*I marched with Greeks and  
Romans  
And ruled the great  
Egyptians.  
I seized a British  
Warship  
While aboard The Constitution.*



*I hunted with Davy Crockett.  
I travelled the  
Oregon Trail.  
And when the men went to the  
Moon  
I rode the rocket's tail.*

*I've been throughout the Earth  
Set my sails on all her seas.  
While riding in my books I go  
Wherever I'd like to be*

*You know, I really love my  
books.  
They give me such a ride.  
Whenever I want to travel I open  
a book and climb inside.*

## **KIWI SPORT**

At present, the School is having discussions with Counties Manukau Sports Foundation with a view to starting up after school cricket using the School grounds and after school swimming tuition using the School pool. If we are successful with our application we would hope to begin in Term 4 and continue through until the end of Term 1 2011.

## **TEACHER APPRECIATION DAY**

A long standing Opaheke School tradition, the first Friday in September is a special day for students to acknowledge and thank their teachers. We look forward to making our teacher's day.



## **OUT OF ZONE ENROLMENTS**

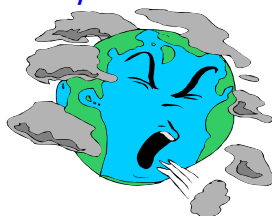
Out of Zone applications for enrolments for 2011 will be accepted from Sept 1st until Oct 15th and the ballot will be held on 20th Oct 2010. If you are living out of our school zone and you have a child to enrol to attend Opaheke School in 2011 you will need to apply. This also applies to siblings of children already attending. Forms are available from the school office or on our website. Applicants will be informed of the decision within five days of the ballot. If the application is successful there will be further procedures to complete.



## **PUBLIC HEALTH SERVICE WEBSITE**

The influenza page has recently been updated on the Auckland Regional Public Health Service (ARPHS) website. The page has links to various documents, as well as links to the Ministry of Health's Influenza 2010

web pages. The ARPHS website address is <http://www.arphs.govt.nz/>. The direct link to the influenza page is <http://www.arphs.govt.nz/notifiable/Influenza.asp>.



## **GYMNASTICS FIELD DAY**

Tomorrow, our gymnastics teams will compete in the Counties North field day at Pulman Park. We wish the teams and Mrs Owen all the best in this big day.

## **PARENTAL RESPONSES:**

Last week our BOT met to consider the responses of the 20% of parents who took the time to respond to the Board's questionnaire. Below are answers to some of the questions raised:

**How can parents/grandparents help in school?** Parents and grandparents can always help with word making, hearing individual children read, PMP assistance in R18 each school morning, shelving junior readers and preparing lunches.

**IT What does the School have in the way of computers to assist students learning?** We have a suite containing 31 new computers that all classes have supervised access to. During lunchtimes the suite is used for computer club group or for Mathletics. The school owns 2 sets of COWS (computers on wheels). These are portable laptops in sets of 10 that can be moved around the senior classrooms. Purchased by the PTA these are exceptional. The PTA is considering purchasing a third set of COWS. Each classroom has at least one desktop computer, some have several.

**What reporting does the School do to parents over the year?** The School issues two written reports each year, one at the end of June (mid year) and one in mid December (end of year). As well, staff arrange oral parent interviews at the end of Term 1 each year. Teachers will frequently meet with parents if required—either by the class teacher or by parental request.

**What playground support is available to assist students who have difficulties with other pupils during playtime and lunchtimes?** Peer mediators; sixty students from Yrs 6,7,8 have been trained to help resolve difficulties that pupils encounter in the playground. They have blue sashes, walk around in pairs and meet with pupils who have minor problems. School Councillors—student leaders from Yr7/8 are on hand to assist pupils who require assistance with making friends or resolving difficulties. In class help is also provided. At present our Yr5/6 classes are involved in the Kia Kaha programme which aims to eliminate bullying and raise self esteem. As well there are always duty teachers to assist and mediate if necessary.

**What additional support programmes are there to help pupils having learning difficulties?** In addition to the usual in class support we have: Reading Recovery for children age 6 years—this is 1 to 1 intensive assistance. Resource Teacher Literacy for pupils having major difficulties in progressing their reading levels. Rainbow Reading for students at risk of falling further behind in Reading. Teacher Aides who work with individual pupils or small groups to boost children's Mathematics Reading or Writing.

### **CELEBRATING SUCCESSSES**

- \* Mathletics - *Rhiannon Wood Y3 and Chirag Bhakoo Y5*, our first students to receive a Gold Award for 2010.
- \* University of New South Wales Science Awards - *Distinction 90-99%: Joshua Gilmore Yr4, Mandy Pope Yr4. Credit 70-89%: Joshua Lowe, Erin Pepper Yr8. Vicent Diep, Samuel Earl, Connor McCormick, Navrajdeep Sandhu Yr7. Timothy Fern, Anqi Yang Yr6. Angus Cameron, Caitlin Todd, Luke Walker Yr5, Sean Palmer Yr4.*
- \* Goldfields rugby rep team *Sativi Leuo.*
- \* Counties North cross country: *Yr5 and Yr7 boys and Yr7 and Yr8 girls teams 1st, Yr8 boys 2nd* in team competition.
- \* Counties North League Team; *Dylan Richardson, Nirai Taylor, Sio Leuo, Joshua Watkins.*
- \* Speech Competitions— an appreciative audience turned out to enjoy our 'best of the best' last Thursday evening. *Yr7/8 results; Anthony Smith 1st, Ronnie Shaddick 2nd, Caitlin Pritchard 3rd.*

- \* Yr5/6 results; *Rachel Biggelaar 1st, Anna Fairweather 2nd, Timothy Fern 3rd.*

### **QUOTE**

*I don't know the key to success, but the key to failure is to try to please everyone*

*Bill Cosby  
1937 -*



## **COMMUNITY NOTICES**

1. Ex Pupil -Stacey Carter from Ray White Papakura (*Ted Ingram Property Service Ltd Licensed REAA 2008*) is offering-\$100 donation to the school upon list & sale of any property. FREE Market Reviews or Appraisals. Call today to discuss DDI- 09 2952017 Mob – 0274733277.
2. 2010/11 Cricket Season Junior & Senior Registration @ Karaka Sports Park;4.30—7.00pm  
Wed 1 Sept, Fri 3 Sept, Thur 9 Sept. [admin@karakacricket.co.nz](mailto:admin@karakacricket.co.nz) or phone Liz 09 2364364.

## **COMING EVENTS**

Thur 26 Aug	Counties Zone League Field Day Gymnastics Field Day at Counties Gym Sport Stadium
Fri 27 Aug	Daffodil Day. Inter school speech finals Yr7/8 at Ardmore School 11am
Fri 3 Sept	Teacher Appreciation Day
Mon 13 Sept	7.30pm PTA meeting in the staffroom all parents welcome
Tues 14 Sept	Board of Trustees meeting
Fri 17 Sept	PTA Quiz evening 7.30pm
Fri 24 Sept	Last day of Term 3

**Quiz:** If the words in this quote were arranged alphabetically, what would the 13th word be? *"Skill without imagination is craftsmanship and gives us many useful objects such as wickerwork picnic baskets. Imagination without skill gives us modern art."*



***Outside of a dog, a book is man's best friend. Inside of a dog it's too dark to read! Groucho Marx.***

Best wishes

*Murray Wratt*  
*Principal*